



ClearSight Clear Bolus

alphaXRT

Contact & Ordering Information

AU: +61 2 9552 4090 | NZ: +64 9 486 1195

info@alphaXRT.com

ClearSight Bolus

A common challenge with other manufacturers' bolus solutions is that their mustard-yellow color can make it difficult to see tattoos, positioning lasers, and air gaps through the material - particularly in dark treatment rooms. Cortex's new ClearSight Bolus is crystal clear enabling faster, easier setups than traditional bolus materials.

Transparent

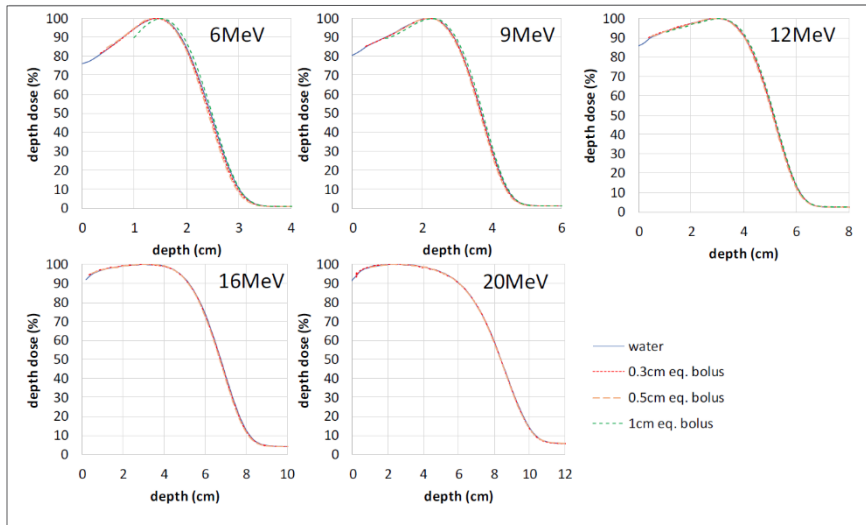
- 100% transparent
- Does not yellow under prolonged radiation exposure
- Easy to visualize tattoos, lasers and air gaps
- Able to be layered for custom thickness while retaining transparency

Practical

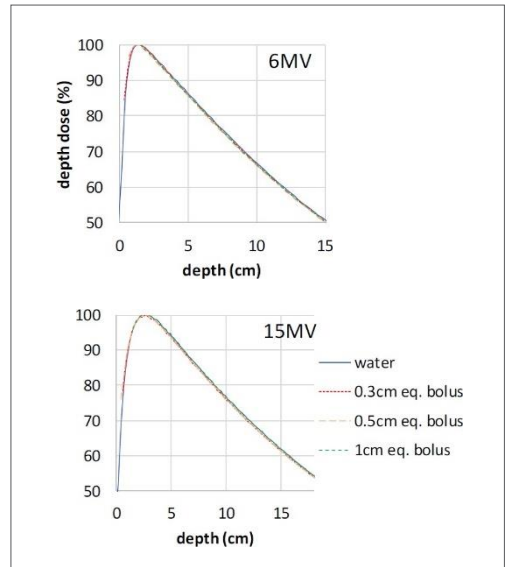
- No goeey center like other bolus materials
- Able to be cut with scissors
- No need to wrap with plastic
- Sticks to itself, but not permanently

Washable

- "Semi-sticky" surface inherent to material
- Retains stickiness after washing and drying



Electron depth dose in water under each thickness of ClearSight Bolus.



Photon depth dose in water under each thickness of ClearSight Bolus.

B-03-18-01 0.34cm (equivalent to 0.3cm water) thickness, 30cm x 30cm, non-sterile, polymer gel bolus sheet (Qty 3)
 B-03-20-01 0.34cm (equivalent to 0.3cm water) thickness, 40cm x 40cm, non-sterile, polymer gel bolus sheet (Qty 3)
 B-05-18-01 0.57cm (equivalent to 0.5cm water) thickness, 30cm x 30cm, non-sterile, polymer gel bolus sheet (Qty 1)
 B-05-20-01 0.57cm (equivalent to 0.5cm water) thickness, 40cm x 40cm, non-sterile, polymer gel bolus sheet (Qty 1)
 B-11-18-01 1.15cm (equivalent to 1.0cm water) thickness, 30cm x 30cm, non-sterile, polymer gel bolus sheet (Qty 1)
 B-11-20-01 1.15cm (equivalent to 1.0cm water) thickness, 40cm x 40cm, non-sterile, polymer gel bolus sheet (Qty 1)

Technical Specifications

- Available in 30cm x 30cm and 40cm x 40cm sheets.
- Ratio of Z_{eff} for ClearSight and water throughout clinical range: 0.761 ± 0.02 .
- Surface dose underneath ClearSight v. other popular Water Equivalent bolus products:
 $-0.9\% \pm 2.3\%$ for photons, $0.49 \pm 1.8\%$ for electrons.
- Change in photon and e- depth dose curves between ClearSight and water: negligible